

Alert Command

INSTALLATION MANUAL



**MULTIFUNCTION, MULTIMODE
AUTOMATIC GENERATOR START SYSTEM
WITH TEXT ALERTS**



These are typical installation instructions for an ONAN 5500 Gas/Diesel/Propane with an 8-pin generator wiring harness.

With a 10-pin the only difference is the connector wiring harness letters and wire colors.

NOTE: Recently Onan has switched to all white wires on their generator wiring harness, so you'll need to identify the wires using the letter designation on the harness connector.

What's Included

- ☐ The Alert Command
- ☐ One 2-slot female connector
- ☐ One 6-slot female connector
- ☐ One 120V Inline fuse
- ☐ Four Posi-Taps
- ☐ One 20-foot Temp Sensor

You will need Alert Command Sim Card# located on back of unit if subscribing to text alerts



What's You'll Need

- ☐ Four 18-gauge wires for generator connection
- ☐ One pair of 14-gauge wires to connect to battery and ground
- ☐ One pair of 14-gauge wire to connect from transfer switch to Alert Command
- ☐ Four screws to mount Alert Command
- ☐ Tools needed to install: Wire stripper, screwdriver (Philips or Flathead) small zip ties or electrical tape.

Step 1



Turn-off your generator AC circuit breakers to avoid interruption of shore power service during installation and testing.



To avoid the risk of an electrical shock when connecting to the transfer switch make sure you have turned-off shore power at the electric pedestal

Step 2



Identify the following 4 wires on your generator wiring harness. Mark or label each one for easy identification.

On a typical **ONAN 8-pin wiring harness** the wires are labeled on the harness as follows:

- ☐ A – Ground – Brown
- ☐ B – Stop – Green
- ☐ C – Start – Red
- ☐ E – Run – Orange

On a typical **ONAN 10-pin wiring harness** the wires are labeled on the harness as follows

- ☐ A – Ground
- ☐ C – Start
- ☐ E – Stop
- ☐ F – Run

NOTE: The pin connections above are typical ONAN connections. Not all ONAN generators have the same generator wiring harness connections as some may have been changed by the dealer or RV manufacturer. Ensure you have properly identified the 4 wires correctly before proceeding with Step 3.

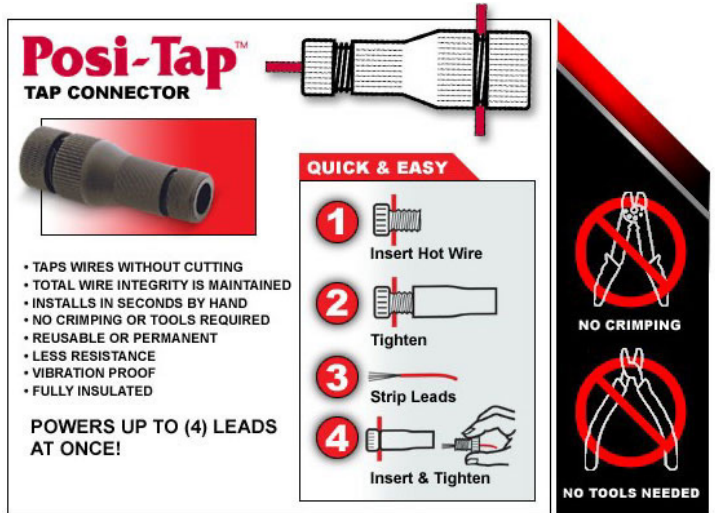
Recently Onan wiring harness have all white wires, so you'll need to identify the pins before you can continue.

Step 3



Connect one Posi-Tap to each of the 4 wires identified in Step 2.

Posi-Tap Tap Connector

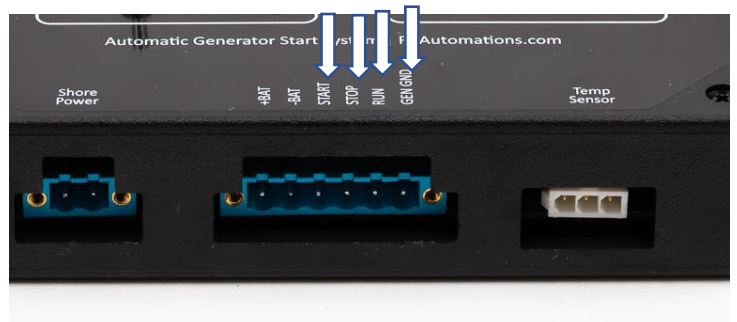


Step 4



Use the four 18-gauge wires for this step.

Make the connection from the wires you have identified in the wiring harness to the corresponding **Start**, **Stop**, **Run**, and **Gen Ground** slots on the Alert Command female quick-connect. (the 6-slot blue connector included with your unit).



Step 5



Use one pair of 14-gauge wire for this step.

Connect 1 wire from the battery (+12VDC) to the +BAT on 6-slot female quick-connect.

Connect a ground wire (-12VDC RV chassis ground) to the -BAT on the 6-slot quick-connect.



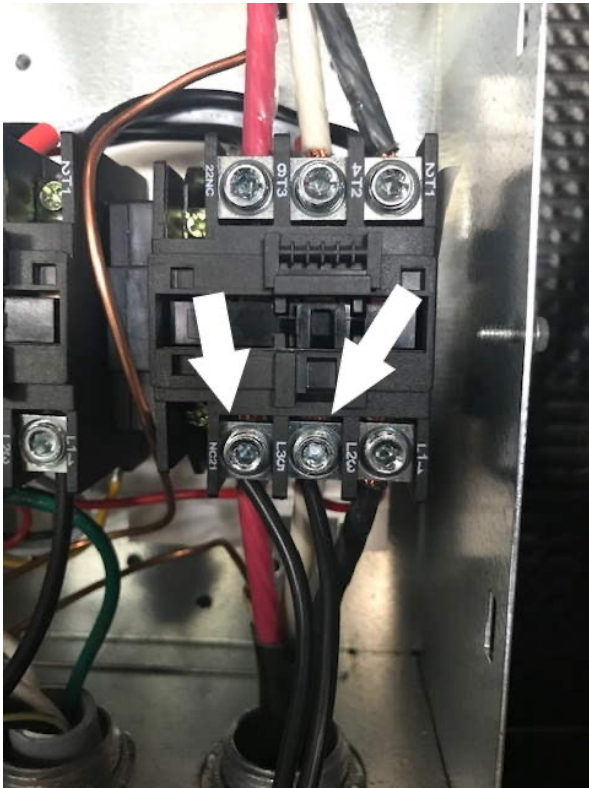
Connect to house batteries not chassis batteries.

In the next step you'll be working with 120V, proceed with caution.



To avoid the risk of an electrical shock when connecting to the transfer switch make sure you have turned-off shore power at the electric pedestal

Step 6

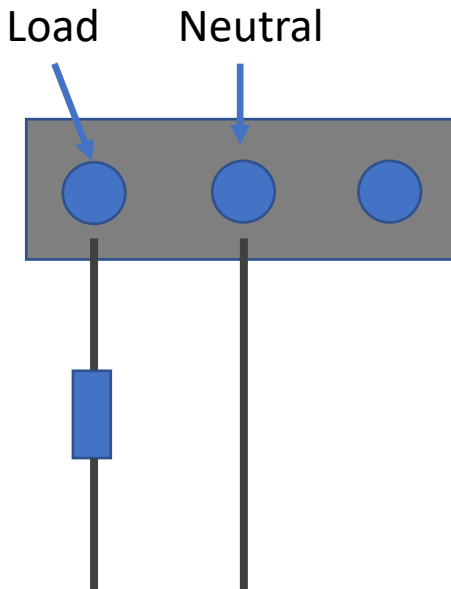


You'll be using a pair of 14-gauge wire for this step.

In this step you'll be connecting from the transfer switch 120V coming from the shore power pedestal to the shore power connector on the Alert Command.

You'll be using a pair of 14-gauge wire

- 1) Prepare your 14-gauge wire by wiring the included inline fuse to one of the wires.
- 2) Connect the other end of the inline fuse to either the red or black terminal on the transfer switch block, either one is 120V.
- 3) Connect the other 14-gauge wire to the neutral (White wire) center terminal on the block.



Run these two wires to the Alert Command and insert them in the 2-slot female blue connector included with your unit. (Either wire can go into either slot.)



Step 7



Temperature Sensor

The temperature sensor comes pre-wired. Simply insert the Temp Sensor connector into the Temp sensor slot on the Alert Command. It only fits one way.



We recommend placing the temp sensor about 2 feet below the ceiling height of your RV.

The next step (Step 8) **requires you have subscribed to Text Alert** in order for you to receive text notifications.

<https://rvautomations.com/subscribe/>

Step 8



- ☐ Restore your shore power at the electric pedestal.
- ☐ Flip Mode Selection toggle switch to Shore Power
- ☐ Flip Monitoring toggle switch to "ON".
- ☐ In about 15 seconds the Cell Modem will illuminate green, indicating the Modem is activated.
- ☐ If you are within range of any cell tower you will receive the following text.

"Alert Command: Enabled and Connected"

For our FAQ or to submit a support ticket visit:

<https://rvautomations.com/support/>